

- NOTES:
 1. SALCO GATE GASKET P/N GGTR111 SOLD SEPARATELY.
 2. APPROXIMATE WIEGHT: 75 LBS.

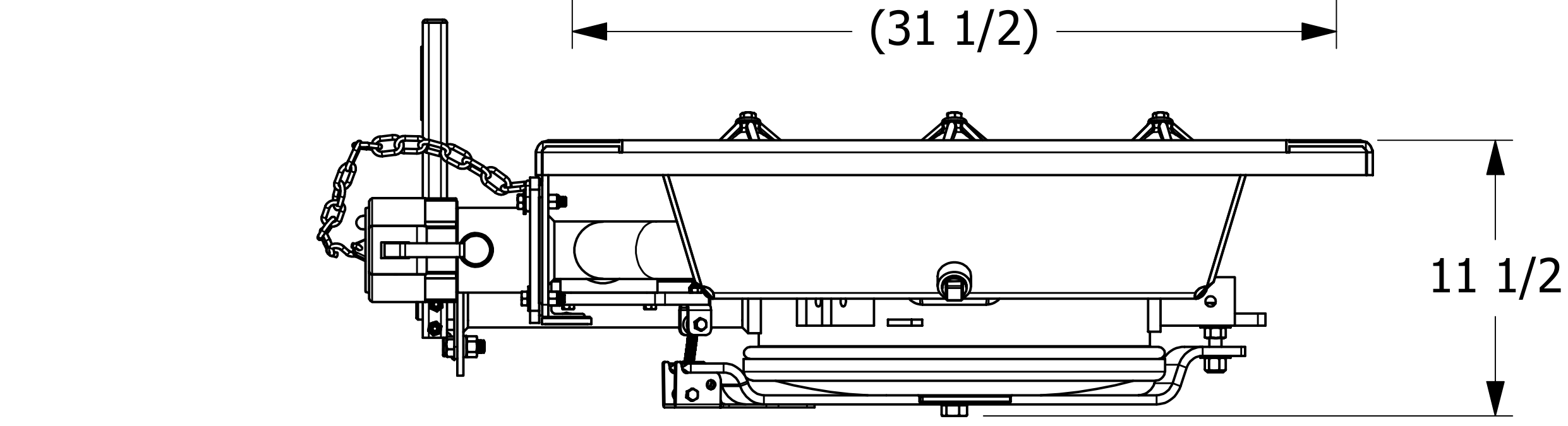
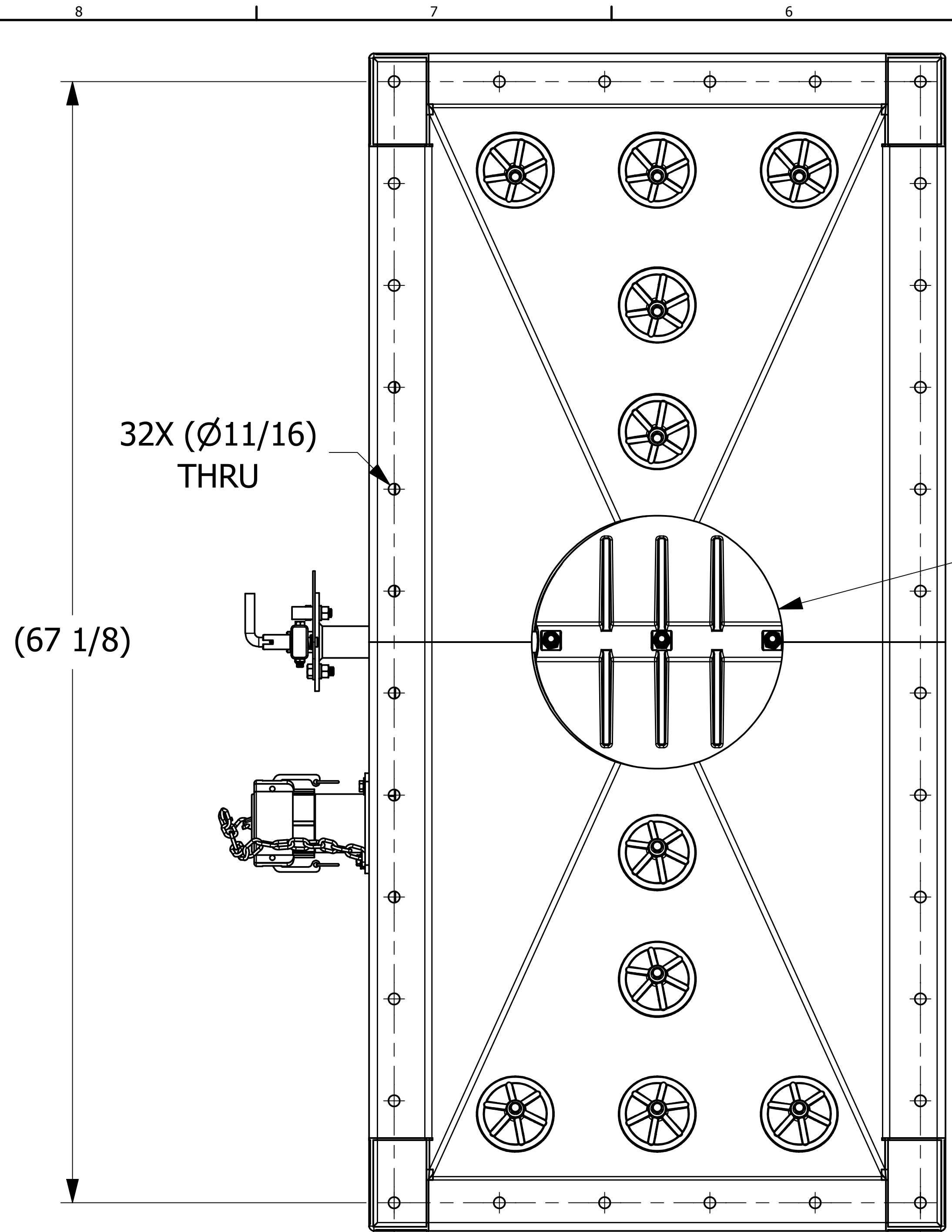
REV	BY	DATE	DESCRIPTION
F	RJP	10-14-16	ADDED LATCH BRACKET TO PHC16DAK
E	RJP	10-4-16	UPDATED GATE BODY TO RECTANGULAR CORNER DESIGN, UPDATED WELD NOTE
D	WEB	8-9-16	REPLACED BVG2005 WITH BVG2005D, ADDED 4X UDS1132223, REPLACED 4X RP103MN W/ 4X EA111N ADDED NOTES 2 & 3
C	RJP	7-12-16	UPDATED GEOMETRY OF BVG2005, ADDED WELD NOTE
B	JG	7-31-14	REPLACED BVG340 W/ WBG360, NUT38XSW W/ RP103MN
A	WRB	12-17-07	ADDED PART TO SYSTEM

UNLESS OTHERWISE SPECIFIED DIMENSIONAL TOLERANCES	DRAWN BY:	WRB
FRACTIONAL: $\pm 1/16$	CHECKED BY:	PJG
X.XX: $\pm .03$	PROTOTYPE BY:	WRB
X.XXX: $\pm .015$	PROTOTYPE DATE:	10/15/2007
ANGULAR: $\pm 1^\circ$	APPROVED FOR PRODUCTION BY:	PJG
DEBURR ALL SHARP EDGES. ALL MACHINED SURFACES TO HAVE A 125 RMS FINISH UNLESS NOTED OTHERWISE.	PRODUCTION DATE:	12/17/2007
THIRD ANGLE PROJECTION		

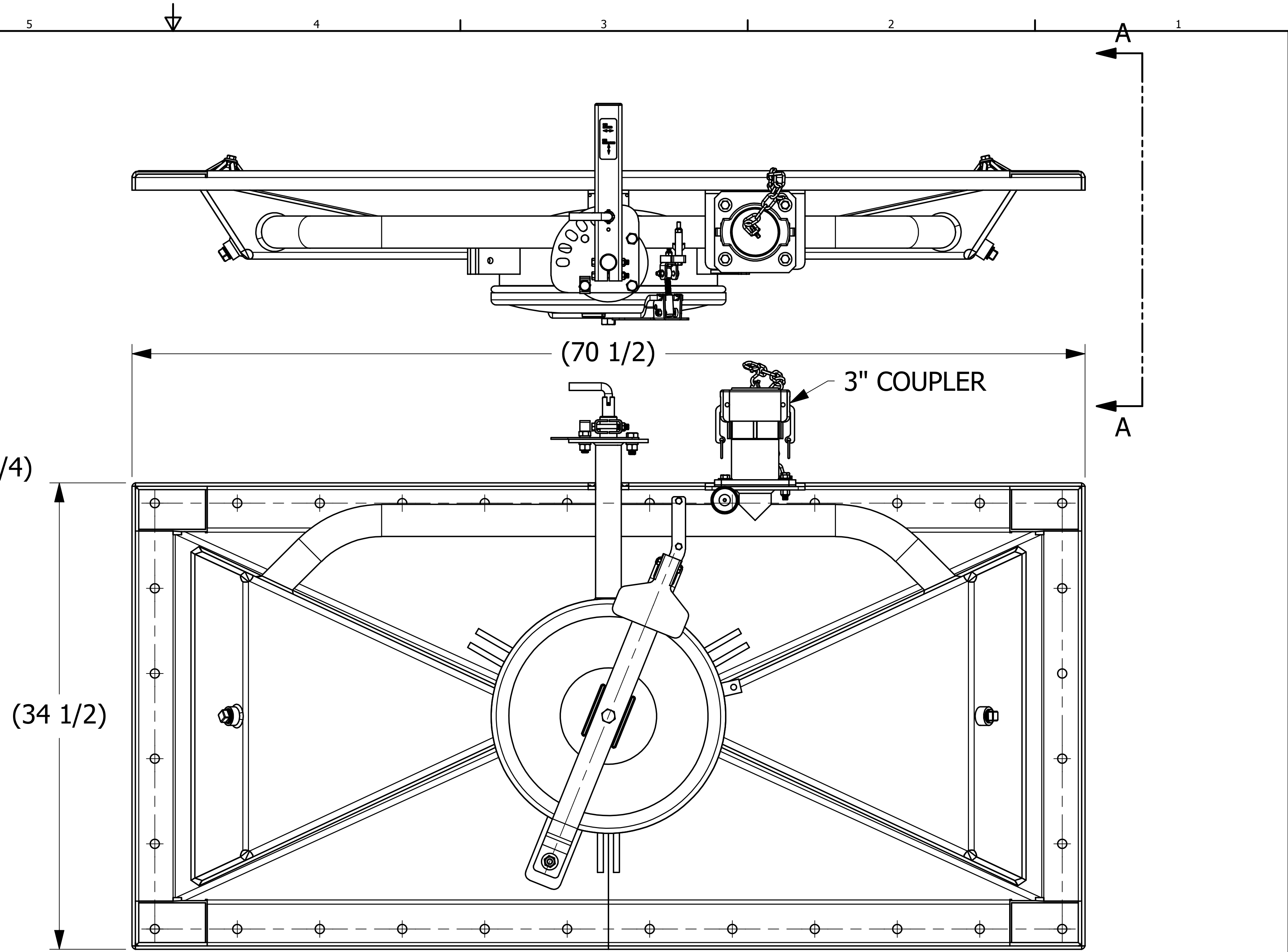
SALCO PRODUCTS, INC.

FLUIDIZING BUTTERFLY OUTLET GATE

MATERIAL: SEE BOM	SHEET #: 1 OF 2	SCALE: 1:5
PROJECT #: 040622	DRAWING #: D24262	PART #: BVG2005DAKS



VIEW A-A



REV	BY	DATE	DESCRIPTION
F	RJP	10-14-16	ADDED LATCH BRACKET TO PHC16DAK
E	RJP	10-4-16	UPDATED GATE BODY TO RECTANGULAR CORNER DESIGN, UPDATED WELD NOTE
D	WEB	8-9-16	REPLACED BVG2005 WITH BVG2005D, ADDED 4X UDS1132223, REPLACED 4X RP103MN W/ 4X EA111N ADDED NOTES 2 & 3
C	RJP	7-12-16	UPDATED GEOMETRY OF BVG2005, ADDED WELD NOTE
B	JG	7-31-14	REPLACED BVG340 W/ WBG360, NUT38XSW W/ RP103MN
A	WRB	12-17-07	ADDED PART TO SYSTEM

UNLESS OTHERWISE SPECIFIED DIMENSIONAL TOLERANCES FRACTIONAL: ±1/16 X.XX: ±.03 X.XXX: ±.015 ANGULAR: ±1° DEBURR ALL SHARP EDGES. ALL MACHINED SURFACES TO HAVE A 125 RMS FINISH UNLESS NOTED OTHERWISE. THIRD ANGLE PROJECTION	DRAWN BY:	WRB
	CHECKED BY:	PJG
	PROTOTYPE BY:	WRB
	PROTOTYPE DATE:	10/15/2007
	APPROVED FOR PRODUCTION BY:	PJG
	PRODUCTION DATE:	12/17/2007

SALCO PRODUCTS, INC.

PART NAME: **FLUIDIZING BUTTERFLY OUTLET GATE**

MATERIAL: **SEE BOM**

PROJECT #: **040622** SHEET #: **2 OF 2** SCALE: **1:5**

DRAWING #: **D24262** PART #: **BVG2005DAKS**

THIS PRINT, PROPERTY OF SALCO PRODUCTS INC. CONTAINS PROPRIETARY INFORMATION AND MUST NOT BE COPIED, REPRODUCED, OR USED DETRIMENTALLY TO OUR INTEREST.